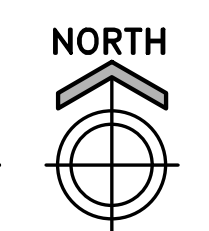
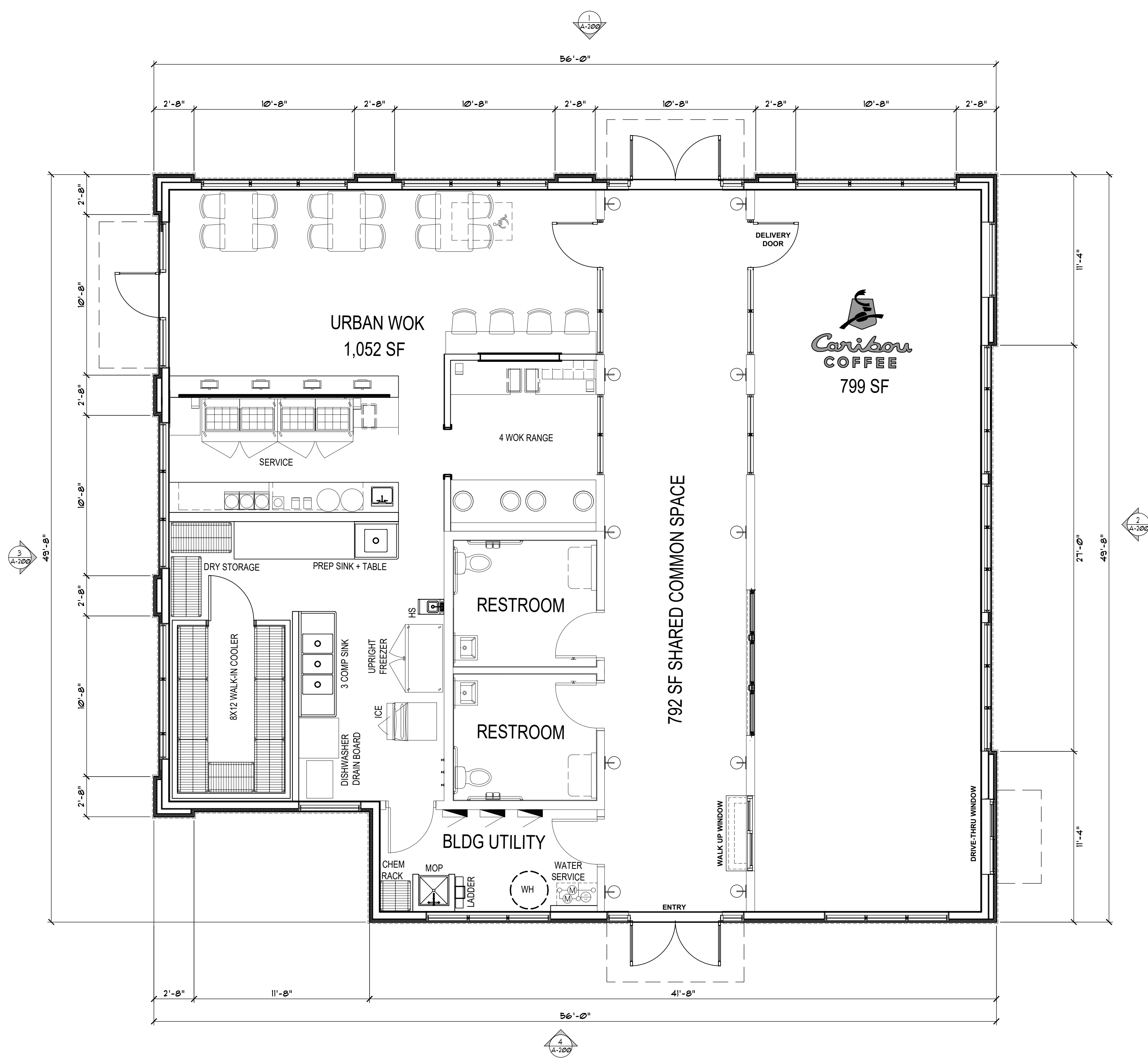


**1 FLOOR PLAN**  
1/4" = 1'-0"



PRELIMINARY  
NOT FOR CONSTRUCTION

PRELIMINARY  
NOT FOR CONSTRUCTION

WAYZATA BLVD MULTI-TENANT  
NEW CONSTRUCTION MULTI-TENANT COMMERCIAL BUILDING  
1022 WAYZATA BLVD E, WAYZATA, MN 55391

**FLOOR PLAN**

DATE ISSUED	
SITE PLAN APPROVAL	02-18-2022
DRAWN BY	CE
CHECKED BY	CS
JOB NO.	21429
PROJECT LOCATION:	WAYZATA, MN